

ScienceDirect

What is ScienceDirect?

ScienceDirect is one of the world's largest providers of scientific, technical and medical literature.

ScienceDirect offers online access to:

- More than 2,000 scientific, technical & medical peer-reviewed journals, the majority published by Elsevier
- Tens of millions of abstracts
- Nearly 8 million full text scientific articles
- An expanding suite of journals, Reference Works, Book Series, Handbooks and e-Books

What can I access?

The Library has subscribed to 3 subject collections within the ScienceDirect database. These are:

- Agricultural and biological sciences (148 titles)
- Environmental sciences (78 titles)
- Business, management, and accounting (74 titles)

This means that staff and students of the college have access to the **full-text of 300 titles** in the above subject areas within the ScienceDirect database.

However we also have access to the **abstracts of all the other titles** within the database.

How do I access ScienceDirect?

To access ScienceDirect go to www.sciencedirect.com

If you are **on campus**, you can begin searching immediately.

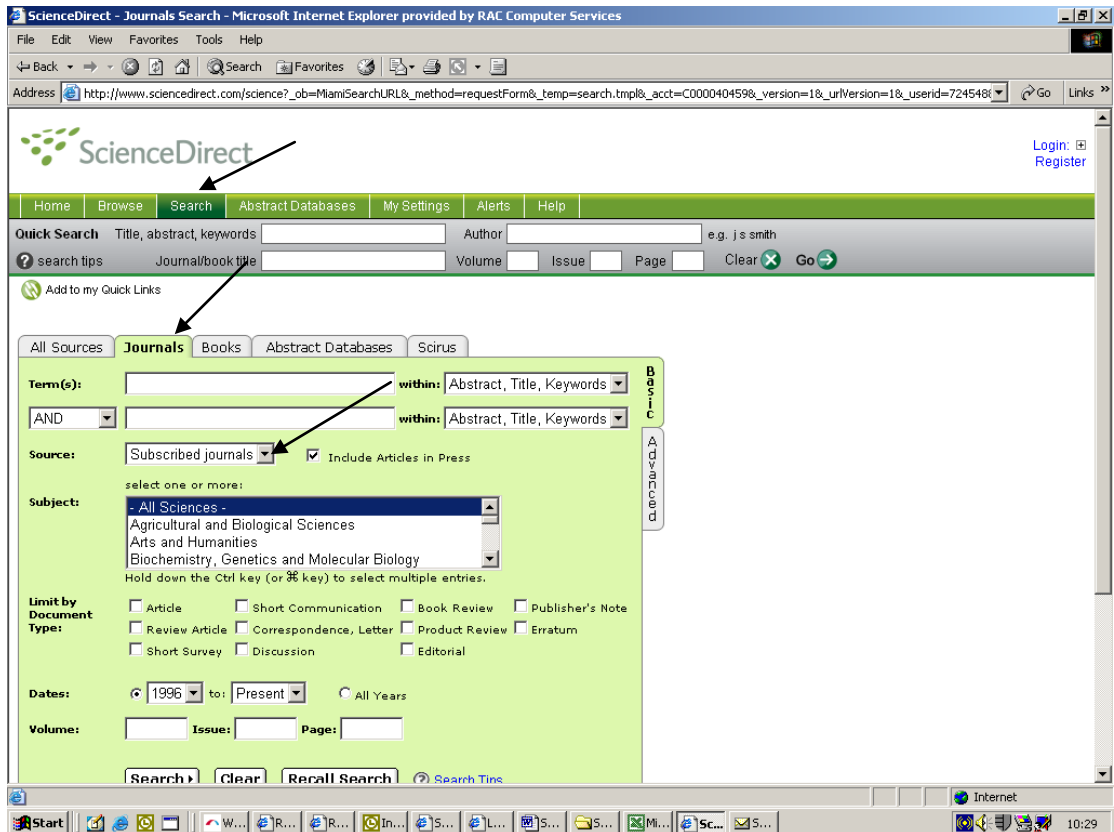
If you are **off campus** you will now need to log in via Athens. Click on the highlighted link "Athens Login" at the top right-hand corner and enter your Athens username and password. The first time you do this you may be asked for your name and email address also.

If you do not have an Athens username and password, the instructions for registering are located on the Library webpage at http://www.rac.ac.uk/?_id=1301

How Do I Find Full Text Articles?

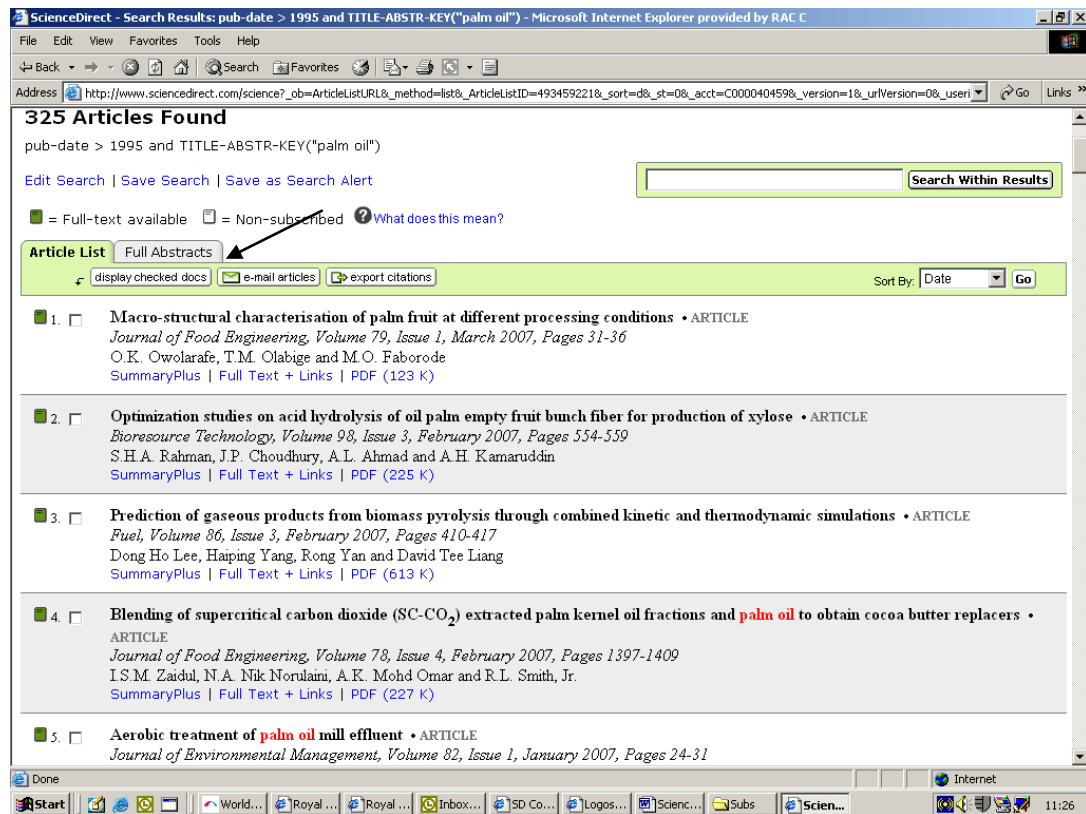
To search for full-text journal articles:

1. Click on “Search” in the green menu bar
2. Click on the “Journals” tab, and then from the “Source” field use the drop-down arrow to choose “Subscribed journals”



3. Enter your search terms, and use the other fields to narrow the search if required.
4. Click on the “Search” button.
5. The results of the search will then be displayed. It will list:
 - the number of results found
 - the citation(s)
 - links to the summary, full-text+links, and PDF
6. If you wish to see the full abstracts of the articles, click on the “Full Abstracts” tab.

- To view the full text of the article, either click on the **PDF** link, or the **“Full Text + Links”** link.



From the search results you can also:

- Do a further search with the results
- Edit the search
- Save the search – (you need to be registered and logged in - see *“Benefits of Registering”* later in this document)
- Save the search as a “Search Alert” (you need to be registered and logged in (see *“Benefits of Registering”* later in this document)).
- Email articles to yourself or someone else. To do this click in the checkbox next to the citation(s) and the click the “email articles” button

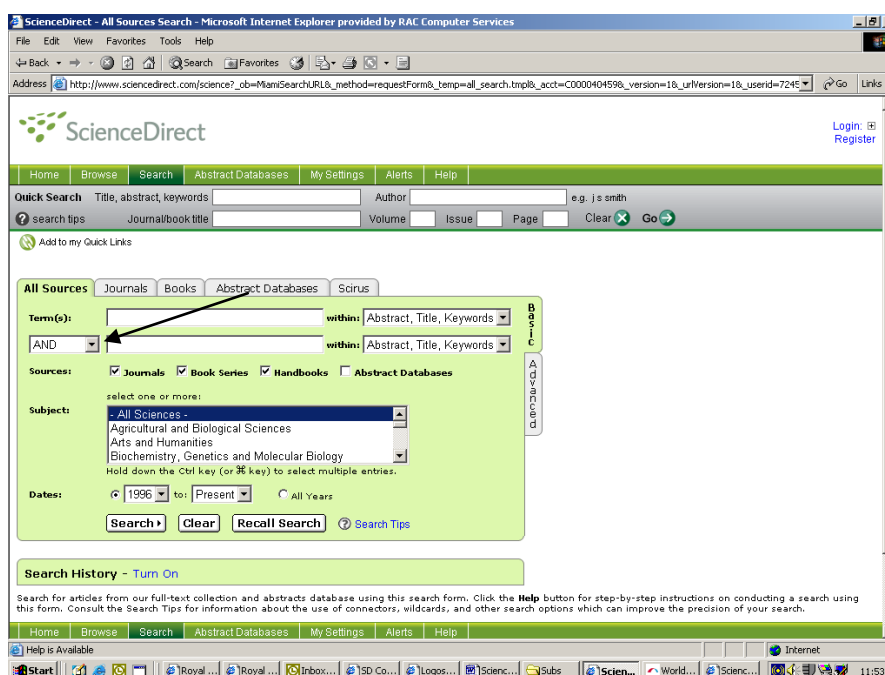
If you have the **citation** of an article, or **know the journal title** you are looking for, there other options for searching. You can

- Enter the details in the **“Quick Search”** area of the page; or
- Click on the **“Browse”** option in the green menu bar then choose the letter that corresponds with the journal title.

How Do I Find More Resources?

More resources may be identified on your topic by doing an “All Sources” search.

1. Click on “Search” in the green menu bar
2. Click on the “All Sources” tab.



3. Enter your search terms, and use the other fields to narrow the search if required.
4. The results of this search may display resources that are not included in our subscription. The white icon (📄) next to the article citation identifies these. You may wish to use inter-library loan to obtain these items.

Why Should I Register with Science Direct?

Registering with Science Direct will enable several personalisation and customisation features. For example you can:

- save the title home pages you have visited recently
- save searches
- save full-text articles viewed
- set up and access email alerts (search alerts, topic alerts, volume/issue alerts, citation alerts)

To register, click on the “**Not registered?**” link at the top right-hand side of the ScienceDirect homepage and fill in the online form displayed.