



ROYAL AGRICULTURAL UNIVERSITY
CIRENCESTER

Postgraduate Offer Guide 2016-7

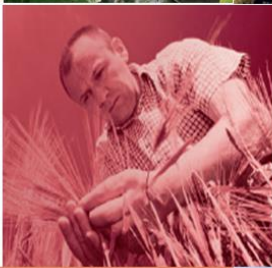
www.rau.ac.uk

**Sustainable Agri-
culture &
Food Security**



**International Rural
Development**

**International
Food & Agri-
business**



Rural Tourism



Business Management

**Rural Estate
Management**



**Food Quality and
Safety Manage-
ment**



**Advanced
Farm
Management**

Applied Equine Science



Stroud Road
Cirencester, Glos., GL7 6JS
Phone: 01285 889912
Email: admissions@rau.ac.uk



ROYAL AGRICULTURAL UNIVERSITY
CIRENCESTER

TOP 10

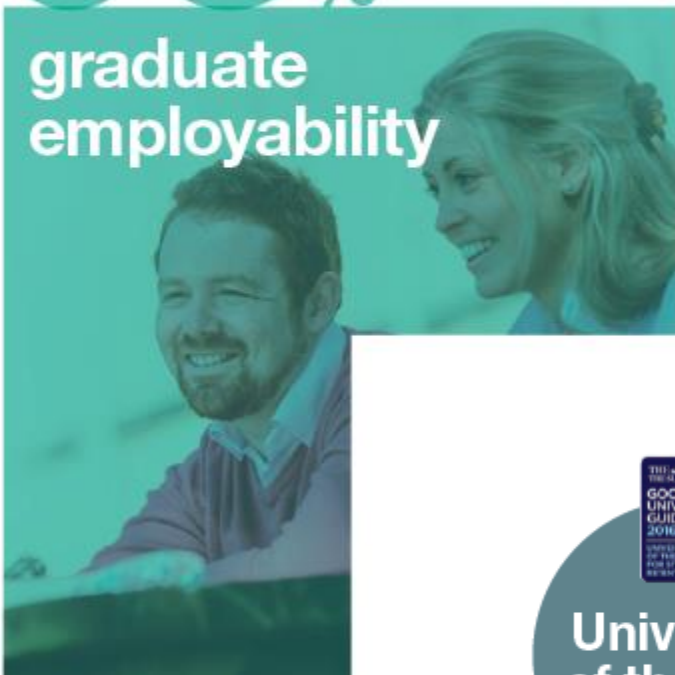
Top 10 in the UK
for academic and
facilities spend

Established in
1845, the first
agricultural
institution in
the English
speaking world



93%

graduate
employability



Top 25% of
UK universities
and colleges
for student
satisfaction

Top
25%



University
of the Year

University
of the Year
for Student
Retention

CONTENTS

Useful web and e-mail addresses 5

Welcome to the RAU 6

Term dates for 2016-17 7

Your personal information 7

Application Checklist 9

Timeline of important dates 9

Post-confirmation checklist 10

Your offer 11

“My RAU” 11

English Language Requirements 11

Booking an IELTS test 11

Providing verification of your qualifications 12

Visa advice for international students 13

Background Information Pro Forma (BIPF) 13

Visa Support Team 14

Confirmation of Acceptance for Studies 14

When to apply for your visa 16

Maintenance costs and financial requirements 16

Financially sponsored students 17

Definition of an Official sponsor 18

Monies paid towards tuition costs 19

What to pack if you are travelling from outside the UK 20

Pre-departure briefings (British Council) 21

International Orientation 21

Registration 22

Money matters 23

Fees 2016-17 23

Cost of living 25

Off Campus Living Costs 25

Choosing your accommodation 28

Visiting the University 29

Cirencester and further afield 30

FAQs 32

Map 33



1 You have now received your offer letter and guide. Read your offer carefully to make sure you understand it fully. *See page 11 Your offer*



2 Go through the application checklist to complete all the key tasks from offer to results. *Application checklist page 9*



3 If you have not yet visited the RAU why don't you have a look at the applicant days available and arrange to come and meet with staff and current students. *"Visiting the University" on page 27*



4 Choose and apply for your accommodation. Applications open in November 2015. If you hold a firm offer you can apply online *Choosing Accommodation page 26*



5 Our **Money Matters** pages provide information on student finance and what support is available. *"Money Matters" on page 21*

6 Check all important dates and the post confirmation checklist *Important timeline and post confirmation lists pp 9-10*





ROYAL AGRICULTURAL UNIVERSITY
CIRENCESTER



Useful web and e-mail addresses

Postgraduate Applications

<http://www.rau.ac.uk/study/fees-how-to-apply/postgraduate-admissions>

Fees

<http://www.rau.ac.uk/study/fees-how-to-apply/paying-fees>

E-mail: studentfinance@rau.ac.uk

Accommodation

<http://www.rau.ac.uk/student-life/living/accommodation>

E-mail: accommodation@rau.ac.uk

Scholarships, Awards, Bursaries

<http://www.rau.ac.uk/study/fees-and-how-to-apply/funding-opportunities>

E-mail scholarships@rau.ac.uk

Student Union

<http://www.rau.ac.uk/student-life/leisure/student-union>

UKCISA

<http://www.ukcisa.org.uk/>

RAU International Community

<https://www.facebook.com/RAUinternationalstudents>





ROYAL AGRICULTURAL UNIVERSITY
CIRENCESTER

Welcome to the RAU

Congratulations on receiving an offer from the Royal Agricultural University.

We hope you find this guide helpful when making what is, undoubtedly, a life enhancing decision. Established in 1845, we are recognised nationally and internationally as a leader in the delivery of education, research and consultancy, in and relating to, agriculture and the rural environment.

Our undergraduate and postgraduate courses help our students to achieve their future dreams in the agricultural, land, business management, food, equine and property industries.

You will find all aspects of life at the RAU varied and exciting. We pride ourselves on being large enough that many facilities are on-site; yet small enough to create a friendly atmosphere. I do hope that you choose to come and join us at the Royal Agricultural University.

Nigel Warner
Academic Registrar



Follow us:





ROYAL AGRICULTURAL UNIVERSITY
CIRENCESTER



THE TIMES
UNIVERSITY
GUIDE
2016

Ranked **FOURTH**
best university in
the South West

Term dates for 2016-17

3rd October – 9 th December 2016	10 weeks
9 th January – 17 th March 2017	10 weeks
*18 th April – 23 rd June 2017	10 weeks
26 th June-30 th September 2017	14 weeks
* Tuesday start	

* The international MBA course will start in August at Utah State University (dates will be emailed to relevant applicants).

Your personal information

Name*

RAU student number

(found on your offer letter)

Programme for

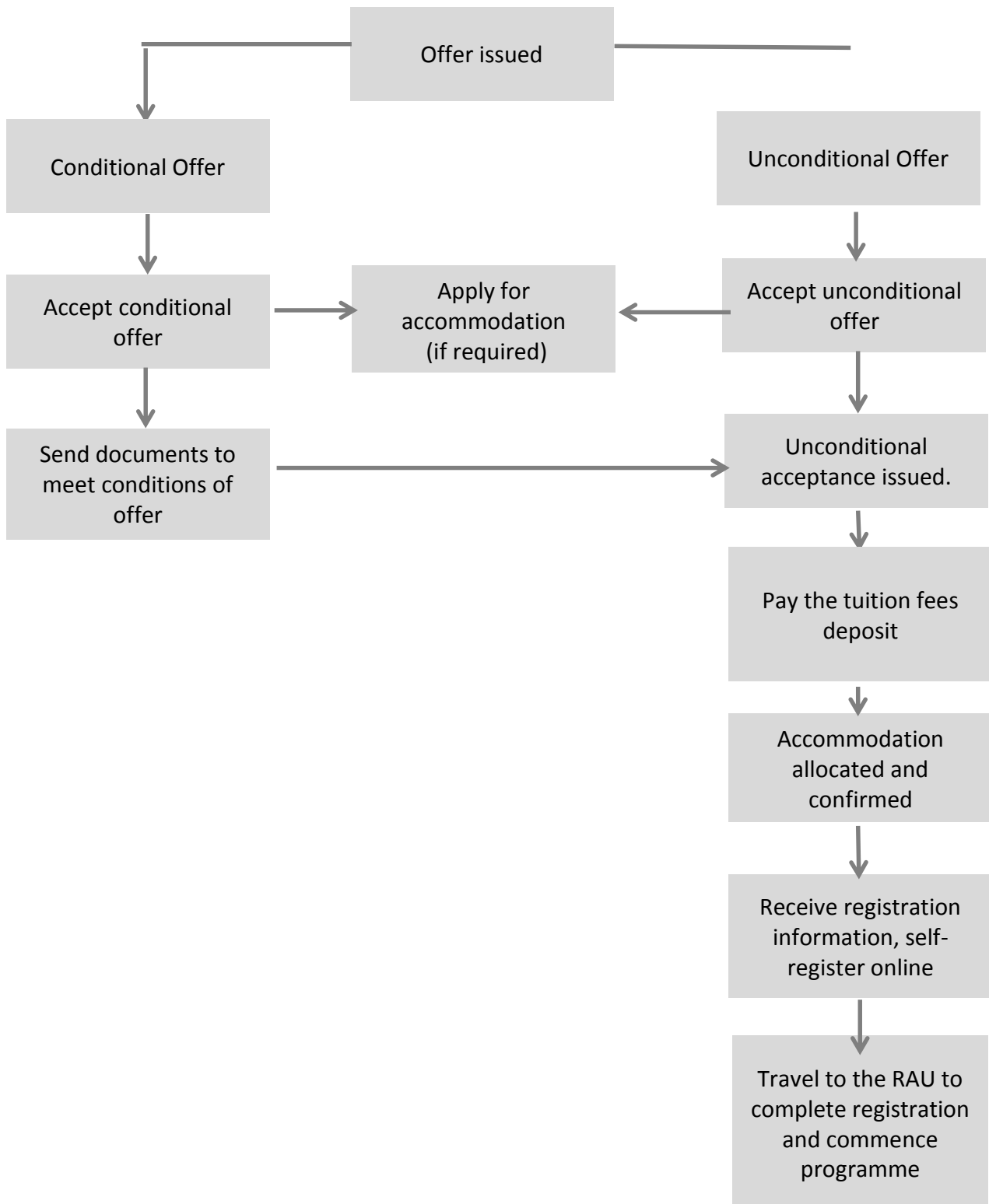
which you hold an offer

*(You will need to have this information to hand when you contact RAU's Admissions Office)



ROYAL AGRICULTURAL UNIVERSITY
CIRENCESTER

Contact us: If you have questions about your offer please feel free to contact admissions at any time. Tel: +44 (0) 1285 889912 Email: admissions@rau.ac.uk





ROYAL AGRICULTURAL UNIVERSITY
CIRENCESTER

Application Checklist

Timeline of important dates

2nd November 2015	Admissions for entry in October 2016 opens
Mid-November 2015	Applications for on campus accommodation open.
24 December 2015 – 3 January 2016	RAU closed for Christmas and New Year holidays
16 January 2016 5 March 2016 4 June 2016 5 July 2016 10 September 2016	Postgraduate Open days A perfect opportunity to visit the University and get a real feel for what life as a student is really like. To book a place: http://www.rau.ac.uk/bookings/postgraduate
25 March-28 March 2016	RAU closed for Easter holidays
May onwards	For applicants holding a conditional offer – send in your final results(final transcript & certificate) by e-mail to: admissions@rau.ac.uk (see also “Providing verification of your qualifications”)
Early May (non-EEA students)	If you are an International Student needing a Tier 4 visa you will be sent an email asking you to complete the BIPF (Background Information Pro Forma). This must be completed as soon as possible and no later than June.
May-June (non-EEA students)	TB screening tests – for Visa applicants. If you are coming to the UK for more than 6 months and are resident in any of the countries listed here you will need to have a tuberculosis(TB) test
Early June onwards (non-EEA students)	For those applicants who need a visa, CAS numbers are issued to unconditional firm offer holders who have submitted their BIPF (Background Information Pro Forma) and confirmed their passport details with Admissions. An e-mail is sent to overseas (non-EU/EEA nationals) offer holders in early May asking for confirmation of these details.
Late August	A confirmation e-mail will be sent to all applicants who are holding an unconditional firm offer. This e-mail will include an electronic statement of confirmation and an electronic Welcome Guide.



ROYAL AGRICULTURAL UNIVERSITY
CIRENCESTER

Post-confirmation checklist

Things to do between September 2016 and your Registration at the RAU

September 2016 (All students)	Get vaccinated. All students – British, european or overseas – admitted to UK universities are advised to be vaccinated against Meningitis C and to ensure all their vaccinations are up-to-date	<input type="checkbox"/>
Before you arrive in the UK (non-UK students)	Obtain sufficient UK currency or an international credit/debit card to cover you until you open a UK bank account	<input type="checkbox"/>
12 September - 25 September 2016 (non-UK students)	Attend the International Orientation events(Dates to be confirmed)	<input type="checkbox"/>
September / October (All students)	Ensure that you pay your fees or that you have a payment plan organised. International Students need to pay the balance of their yearly tuition fees before or by enrolment.	<input type="checkbox"/>
	Complete your online self-registration before you arrive at the RAU for your onsite registration.	<input type="checkbox"/>
26 September –2 October 2016 (All students)	Student Registration & Induction Attend Registration – Induction Week starts	<input type="checkbox"/>
Within 7 days of your arrival in the UK (Tier 4 students)	Nationals of certain countries will need to register with the police. RAU also arranges dedicated dates for students to do so.	<input type="checkbox"/>
Within 10 days of your arrival in the UK (Tier 4 students)	Collect your Biometric Residence Permit(i.e. Tier 4) from the appointed Post Office	<input type="checkbox"/>



ROYAL AGRICULTURAL UNIVERSITY
CIRENCESTER

Your offer

You will be receiving an offer letter outlining the conditions of your offer.

- If you accept a conditional offer it will remain at this stage until all of the respective conditions have been met.
- Applicants with an unconditional offer will have met all conditions required for the course.
- Applicants wishing to defer their offer they must have satisfied all conditions by 31st August 2016 in order for a place to be reserved for you in September/October 2017.

Please note that deferral requests must be submitted in writing to admissions and they will be considered on merit.

“My RAU”

Once you receive an offer from the RAU you will be able to log into the university’s applicant portal. “My RAU” can be found [here](#), your username will be your eight digit student number which is printed at the top of your offer letter. Your password will be your date of birth in the format ddmmYYYY. You will be invited to change your password on your first visit.

English Language Requirements

If your Bachelor’s degree is not from a UK HEI or a majority English speaking country

HEI (excluding Canada) and you are not a national of a majority English speaking

country then you will need to provide evidence of your English proficiency.

International postgraduate taught students must provide evidence of English language competence as follows:

- IELTS 6.5 overall (with no less than 5.5 in any of the elements) or equivalent.

If there is an English proficiency condition in your offer, it will be stated in your offer conditions on the offer letter you have received from RAU.

Booking an IELTS test

If you are planning to take an IELTS Academic test we recommend you plan to take it early and in time to meet the 1st August deadline. Plan and book your test **early**. More information can be found at ielts.org.



We are also pleased to be able to refund the cost of the IELTS tests for overseas students who choose to study at the Royal Agricultural University (RAU).

reference sent directly from your referee's academic e-mail address.

Providing verification of your qualifications

Photocopies will need to be verified by your University. Photocopies of your certificates & transcripts must meet the following conditions:

1. The document must be signed and stamped by your institution
2. The signatory must also print their name and job title
3. If the qualifications/results are in a language other than English then a certified official translation of the original document must also be submitted at the same time.
4. References must be provided on the official headed paper of your institution and signed.
Alternatively, we can accept a

You should submit any certified official documents as soon as they become available. For applicants requiring a study visa these should not be received later than the end of May 2016.

Documents can be e-mailed to admissions@rau.ac.uk (only pdf files in colour and good definition will be accepted). The originals must be submitted on the day of your registration.

If you are an international student you should send us coloured scanned copies your documents as soon as possible as we cannot issue a CAS until you receive an unconditional offer.

If the University finds that the examinations/qualifications/results you have declared on your application are inaccurate or you are unable to verify them, the University reserves the right to withdraw the offer or cancel your application.





ROYAL AGRICULTURAL UNIVERSITY
CIRENCESTER



Visa advice for international students

Overseas (non-EU/EEA nationals) applicants who hold offers of a place at the Royal Agricultural University are advised to allow plenty of time to apply for and obtain their student visa. You can apply for your visa up to three months before the start of your course. To apply you will need a **CAS** (Confirmation of Acceptance for Studies) number from us so that you can complete your Tier 4 student visa application.

Background Information Pro Forma (BIPF)

Starting in early May, all overseas offer holders who have accepted their offer will receive an e-mail with instructions on how to submit this important form.

- The BIPF form is mandatory for those overseas students who require a CAS number, which is used to apply for a student visa. The BIPF form must be completed and returned within 1 week of the receipt of the e-mail and no later than 1st August 2016.
- Confirm your passport details to us
- Return a copy of the financial document to be used in support of your visa application

Overseas students who require a student visa will not be issued a CAS number until the form has been completed and returned to us.



ROYAL AGRICULTURAL UNIVERSITY
CIRENCESTER

Visa Support Team

We have a Visa Support Team, who are immigration/visa specialists with extensive experience. The Visa Support Team provides you with a one-to-one personalised service covering every aspect of the visa application process and is always available to give you whatever advice you need in relation to your UK Study visa.



This specialist service is provided to you free of charge. When you have been given an unconditional offer by the RAU, the Visa Support Team will be in contact to guide you through the visa application process.

Please note the free visa support is only for student visas of students, who are studying with the RAU. The Visa Support Team can provide help with other visas, such as for dependents, but there would be a charge for those services.

The Royal Agricultural University has a Tier 4 Sponsor Status (previously known as HTS) and is on the Home Office's Register of Sponsors. For all visa enquiries please contact visa.support@rau.ac.uk.

Confirmation of Acceptance for Studies

The CAS is a unique reference number issued to the RAU by the Home Office after we supply them with details regarding your programme of study, admissions and personal details. A CAS can be issued to you only once you have met the conditions below:

- Firmly accepted your unconditional offer
- Paid the required deposit for your course(or provided evidence of your financial sponsorship/student loan)
- Completed the BIPF form
- Confirmed your passport details to us
- Returned the financial document to be used in support of your visa application



ROYAL AGRICULTURAL UNIVERSITY
CIRENCESTER

Once you receive your pre-CAS statement e-mail you should check that the information it contains is correct paying special attention to your name, nationality, passport details and qualifications listed. If you notice an error you should immediately contact visa.support@rau.ac.uk

Once the CAS number has been assigned by the Home Office, the Admissions Office will e-mail you to let you know and we will provide your CAS statement and number to the Visa Support Team. The CAS statement lists the evidence we used to assess your application when making a decision to offer you a place. You will need to submit evidence of these qualifications (in the form of original certificate/transcript) along with your visa application

Important:

Please keep the Visa Support Team and Admissions up-to-date with any changes to the information contained in the CAS statement (e.g. passport number) so that we can update the Home Office and avoid your visa application being rejected.



Newsflash April 2015: A new Immigration Health Surcharge(IHS) was introduced on 6 April 2015. If you're applying online or through the premium service centre, you'll pay the IHS surcharge as part of your application or when you book an appointment.

If you're applying by post, you must [pay the healthcare surcharge online](#) before you send your application - you'll need to include the IHS reference number on your application form.

The IHS costs £150 per year for a student. It is calculated on the basis of the length of the visa you will be granted. To calculate how much you will have to pay visit the website [here](#). The IHS is mandatory and failure to pay the correct amount could lead to a refusal of your visa. Some people are exempt, but they will still need to obtain an IHS number to include in their Tier 4 application

To pay for the IHS please follow the steps below:

1. Read the [UKVI web pages](#) for the up-to-date information on the IHS;
2. Find out [when you need to pay](#) the surcharge or if you are exempt from payment;
3. Calculate how much your surcharge will be using the [Home Office Calculator](#). You should refer to your course dates as stated on your CAS.
4. Keep a copy of the email you are sent by the Home Office with your IHS number for reference. You will be required to write the number on your Tier 4 application form.



ROYAL AGRICULTURAL UNIVERSITY
CIRENCESTER

When to apply for your visa

Our Visa Support Team will help you with your Tier 4 application. Please note that you cannot start a Tier 4 application until a CAS has been assigned by the RAU. If you apply without a CAS your application will be refused.

A CAS number is valid for 6 months and can only be used once. You can apply for a visa from up to 3 months before the sponsorship start date stated on your CAS. We strongly advise you to apply as early as possible in the 3 month window.

If you are already studying in the UK at a different institution you will have to apply for a Tier 4 visa for the RAU before you can register and start your course. You cannot start your programme at the RAU if you hold a Tier 4 visa for a different institution.



You will need to submit your passport as part of your application and attend a biometrics appointment. We strongly advise you not to arrange any other travel until your visa is granted.

Maintenance costs and financial requirements

If you are coming to study in the UK you will need to prove that you have enough money to pay for our course fees and your living costs while you are studying here. The Home Office refers to these as the maintenance (funds) requirements. You will need to prove that you have:

- Tuition fees for the first year of your programme or for the entire course if it is less than a year long
- **From 12 November 2015**, the amount you must show for living costs will change. From this date you must show that you have:
 - Tuition fees for the first year of your programme or for the entire course if it is less than a year long



ROYAL AGRICULTURAL UNIVERSITY
CIRENCESTER

- £1,015 per month for living costs if you are studying outside London or anywhere else in the UK, for the majority of your study (i.e. you will need to show 9 months X £1,015=£9,135)

Important: You must show that you have held the required money for a consecutive 28 day period (finishing on the date of the closing balance) ending no more than 31 days before your application.

The Home Office will accept only specific documentation and it is essential that you follow the guidance given by our Visa Support Team and the Home Office policy [guidance](#) to ensure that you can use and obtain these documents in time to apply for your visa.



Financially sponsored students

Arrange for your sponsoring body to issue a confirmation letter. This must be received the latest by 1st August.

If you are being sponsored, evidence of sponsorship must be issued by an authorized officer of an official sponsoring body and must have a recent date of issue (within 30 days from sending). The letter should be on company/organisation headed paper and should clearly state:

- Your name and University number
- The programme for which you have been offered a place
- The level of fees that will be paid by the organisation/company in sterling pound



ROYAL AGRICULTURAL UNIVERSITY
CIRENCESTER

- The address the invoice should be sent to
- The contact person and department in the organisation/company
- That the fees (quoted in in sterling pound)will be paid directly to the Royal Agricultural University

Please provide evidence of sponsorship by emailing Admissions@rau.ac.uk

Definition of an Official sponsor

An **official financial sponsor** is defined in the Tier 4 policy guidance as:

- *the UK government*
- *your home government*
- *the British Council*
- *any international organisation*
- *an international company* (N.B. the Home Office has not defined 'international company' but it seems to mean a company with a trading presence (an office) in more than one country)
- *any university*
- *an Independent School*

If you receive funding from any of the above sources, you will need a letter from them confirming how much money they will contribute towards your course fees and maintenance. If your official financial sponsor is also your Tier 4 sponsor and they have included details of your financial sponsorship in your CAS, you do not need an additional letter. The letter must show:

- *your name*
- *the name and contact details of the official financial sponsor*
- *the date of the letter*
- *the length of the sponsorship*
- *the amount of money the sponsor is giving to you, or a statement that all course fees and living costs will be covered.*

If you are a "low risk" student, you should obtain this letter and keep it safe, but you do not need to include it with your initial application. All other applicants must include the letter with their application.



ROYAL AGRICULTURAL UNIVERSITY
CIRENCESTER

If your official financial sponsor is not covering all of your course fees and maintenance, you must be able to demonstrate that you have the rest of the money required.

Consent of current or previous official financial sponsor, if they are a government or an international scholarship agency

If you have an official financial sponsor for your proposed studies, and the sponsor is a government or an international scholarship agency, their sponsor letter (which you will need for evidence of your money, see below) should specifically state that they consent to your Tier 4 (General) application.

If you have previously received financial sponsorship from a government or international scholarship agency for your studies, and the sponsorship ended less than 12 months ago, you must also obtain and include a letter of consent from this financial sponsor.

Monies paid towards tuition costs

We will update the Home Office CAS database with details of any tuition fee payments you make. This enables them to take such payments into account when calculating your ability to finance your studies in the UK.

Your CAS statement will list any accommodation deposits paid in advance.

The maximum amount that can be taken away from the total amount of money you will need to show for living costs will be £1,265 **even if you have paid more than £1,265 in advance for accommodation.**

If you make a payment towards your fees we will make updates to the Home Office database approximately within 48 hours after the money has cleared with our bank. Please ensure that you also write to the Visa support Team to inform us of any payments / additional tuition fee payments you have made. You must wait for an updated CAS statement from us before applying for your visa if you need to show that you have paid money to the RAU.

Important: It can take up to two weeks for monies to clear, so, you will need to plan for this when preparing your visa application.

You should not make payments if you have a visa appointment within the next fortnight as it is likely that we may be unable to issue you with an updated CAS statement before your appointment.



ROYAL AGRICULTURAL UNIVERSITY
CIRENCESTER



What to pack if you are travelling from outside the UK

Documentation

Carry the below in your hand luggage in case hold luggage is late or lost:

- Passport
- Visa & entry clearance documents
- Your offer letter
- Proof of degree(final transcript, certificate)
- Scholarship/funding information documents
- Travel and health insurance documents
- Cash-Travellers cheques-credit cards
- Contact details and directions for your accommodation

Clothing

The weather in the UK is changeable. Temperatures may go down as low as -3 degrees Celsius during the winter (Dec-March) and as high as 32 degrees during the summer (June-Aug). Rainfall is common but most of the time is light.

If you arrive in September we suggest you bring a sweater and a light (waterproof) jacket or a small umbrella for the journey. A pair of comfortable waterproof shoes is also recommended. Agriculture and Equine students are advised to have a pair of wellington boots.



ROYAL AGRICULTURAL UNIVERSITY
CIRENCESTER

There is no particular dress code. In general students tend to dress informally (jeans, T-shirt, trainers) whilst on campus. Smart clothes are occasionally worn either for recruitment events with employers or on social events such as the Freshers, the Christmas and the May ball.

Electrical appliances

Electricity in the UK operates on 220-240 volts. You should check your appliance manual to ensure it will work in the UK. You will also require a three pin plug adaptor which is available in most shops.

Mobile phone

Check with your home service provider before you travel to the UK. It may be expensive to make calls in the UK and back home from your current phone. Pay as you go phones can be bought for as little as £5 although individual call and text charges may be comparatively higher. Pre-pay phones do not require a UK bank account or address so they may be easier to buy if you are waiting to open a bank account. Do shop around to get the best deal before you decide!

Pre-departure briefings (British Council)

The British Council runs 'pre-departure briefings' in many countries for students who are planning to study in the UK. At these events, British Council staff gives you advice about what to pack, travelling to the UK, settling in and much more. More information is available on the British Council website: <http://www.educationuk.org/global/articles/predeparture-briefings/>

International Orientation

The RAU International orientation is a 2 week programme that includes a variety of formal and social activities to introduce you to the University, your School and to help you settle in to your studies.





ROYAL AGRICULTURAL UNIVERSITY
CIRENCESTER

During this time you are invited to attend events run by the University, your School and by the Student's Union.

International Orientation events begin on Monday 12 September 2016.

Detailed information is now advertised on the RAU website here: <https://www.rau.ac.uk/university-life/international/international-orientation> . The cost of the orientation programme is £350 (includes airport pick up, accommodation, food, travel fares for orientation programme visits & entry fees) and you can view the full programme details [here](#). You can book your place online on MyRAU.



Registration

To complete your formal enrolment at the RAU you must register with the central administration. This is a 2 part process here at the RAU:

- Part 1 Online Self Registration- completed online on My RAU
- Part 2 Onsite Registration – you will complete this on Monday 26th September here on the RAU campus.

We will send you a contact e-mail towards the end of August/beginning of September with joining instructions.

Registration is a straight forward process which involves you providing proof of your identity and eligibility to study in the UK.

During registration you will be issued with your student card which will confirm your status as a registered RAU student and allow you to use restricted access buildings, such as the Library. **Onsite registration is scheduled for Monday 26 September 2016.**

Documents to bring with you to Registration

All students

Originals of the qualifications you gained entry on your course and a photo id.

For EEA nationals



ROYAL AGRICULTURAL UNIVERSITY
CIRENCESTER

Photographic identification that verifies your EEA nationality, such as your passport or national identity card. Please note that the University is required to take a copy of your documents at registration.

For non- EEA nationals entering the UK with a student visa
Your passport showing evidence of your right to study at the RAU and the period for which you have permission to remain in the UK.

Please note that the University is required to take a copy of your documents at registration.

Money matters

Fees 2016-17

Please note: The fees listed below represent those payable by new students starting in 2016.

School of Agriculture, Food and Environment

September 2016 Entry

Type	UK/EU Students	International Students
Graduate Diploma in Agriculture	£10,250	£11,270
MSc Food Safety and Quality Management	£6,660	£11,270
MSc International Rural Development	£6,660	£11,270
MSc Sustainable Agriculture and Food Security	£6,660	£11,270

School of Business and Entrepreneurship

Type	UK/EU Students	International Students
MBA Advanced Farm Management	£12,000	£15,000
MBA International Food and Agribusiness	£12,000	£15,000
MSc Business Management	£10,000	£12,000
MSc Rural Tourism Management	£10,000	£12,000

School of Equine Management and Science

Type	UK/EU Students	International Students
MSc Applied Equine Science	£6,000	£7,000

School of Real Estate & Land Management



ROYAL AGRICULTURAL UNIVERSITY
CIRENCESTER

Type	UK/EU Students	International Students
MSc International Real Estate*	£9,220	£11,270
MSc Real Estate (Study at Cirencester)	£9,220	£11,270
MSc Rural Estate Management	£9,220	£11,270

Course Specific Charges

Type	Fee
*MSc International Real Estate: All accommodation and travel expenses for overseas placement period are the responsibility of the student	Approx £2,000 + living expenses

RAC/RAU Alumni

All RAC/RAU alumni who are accepted for postgraduate study at the RAU are eligible for a 20% reduction in tuition fees. Only one discount is available per student life. Additionally, Alumni may also be eligible for other funding in the form of scholarships, bursaries and awards. The 20% reduction in fees is available to visiting students who have completed a minimum of one term of studies at the RAU campus.

Further information on fees, financial support and how to pay can be found on our [website](#).

Students can find information on postgraduate financial support, [here](#).





ROYAL AGRICULTURAL UNIVERSITY
CIRENCESTER

Cost of living

On Campus accommodation costs

Self-Catered

Room Type	Annual Rate
En-Suite Single	£5,031

Dinner, Bed & Breakfast

Room Type	Annual Rate
Large En-Suite Single	£6,876
En-Suite Single	£6,696
Small En-Suite Single	£6,516
Standard Single	£5,400
Large Standard Single	£5,616
En-Suite Twin	£3,852

Fully Catered

Room Type	Annual Rate
Large En-Suite Single	£7,848
En-Suite Single	£7,668
Small En-Suite Single	£7,488
Standard Single	£6,408
Large Standard Single	£6,588
En-Suite Twin	£4,824



Please note that charges for electricity are in addition to these costs, but your internet and water costs are included.

Off Campus Living Costs

Off-campus accommodation charges vary depending on the type of room or house rented. Charges for a one-bedroom flat or room in a shared house range from £350 - £450 per month. Utilities such as gas, water and electricity may be an additional cost.



ROYAL AGRICULTURAL UNIVERSITY
CIRENCESTER

The table below gives an estimate on other living costs in addition to accommodation costs that you may occur while at university. Remember that costs vary depending on your lifestyle and you should also take into account flights or transportation to and from the UK.

	<u>Monthly Cost</u>	<u>Academic Year Cost</u>
Gas / Electricity	£50	£450
Water	£45	£405
Internet	£20	£180
Mobile Phone	£25	£225
Laundry / Household Items	£35	£315
Leisure (meals out, cinema, bars, etc)	£135	£1215
Photocopying / Printing	£18	£162
Food	£200	£1800
Course Books / Materials	£75	£675
Insurance	£5	£45
TV Licence	£16	£144
<u>Total</u>	<u>£674.00</u>	<u>£5616.00</u>

If you are an overseas student you may want to use the [International Student Calculator](#) to help with budgeting before you come to the UK.





ROYAL AGRICULTURAL UNIVERSITY
CIRENCESTER



RAU Scholarships, Awards and Bursaries

The Royal Agricultural University has a wide range of funding opportunities. The Scholarship Scheme was established to provide worthy students with the support necessary to work towards achieving their full personal potential during their period of study at the University. To find out whether you're eligible for one of our scholarships, award or

bursaries please visit our website [here](#).

Only one Royal Agricultural University managed scholarship can be held at one time*. These funding opportunities should be applied for once a firm offer at the RAU has been accepted.

Charities Foundations and Trusts

Some charities, trusts and foundations offer funds to students who are undertaking particular routes of study and research. These range from large medical societies and charities through to very small organisations. The awards these organisations provide will range in value and eligibility criteria, which may include academic, sport, hobbies, parental occupation and residency

Alternatively, you can search for support from trust or charity organisations online at

www.postgraduatestudentships.co.uk

www.scholarship-search.org.uk or

www.gradfunding.co.uk





ROYAL AGRICULTURAL UNIVERSITY
CIRENCESTER

Choosing your accommodation



Student Accommodation at the RAU

At the RAU we have 320 student bedrooms that we offer to First Year Undergraduates, but we also offer a limited number of rooms to returning and postgraduate students. We have a mixture of Catered and Self-Catered accommodation with the Dinner Bed and Breakfast option as standard, however, you have the opportunity to upgrade to a fully catered package. We also offer “quiet bedrooms” for students who prefer the more tranquil environment. The bedrooms are a mixture of standard rooms with shared bathroom facilities, en-suite rooms and twins



How to apply for accommodation at the RAU

Applications for on campus Accommodation will open on Monday 16th November 2015. You will need to hold a firm offer with the RAU to apply. All applications will need to be made via the MyRAU portal.

Applications are dealt with on a first-come first-served basis so to ensure that you get the room of your choice you will need to apply as early as

possible, after the Portal has opened.

If you have any further queries, please do not hesitate to contact the Accommodation Office at accommodation@rau.ac.uk or call 01285 652531.

Accommodation Guide

If you'd like to read more about the Halls of Residence available for both Undergraduate and Postgraduate students, please download our [Accommodation Guide](#).



ROYAL AGRICULTURAL UNIVERSITY
CIRENCESTER

Visiting the University

Open days

The best way to find out what the student experience is like at the Royal Agricultural University is to visit, explore, ask questions and meet current students and staff. It is important that you take the opportunity to attend one of these events, especially if you have not visited our campus before.



We would advise confirming your attendance early as many of the dates do become fully booked. Please select a favoured date and a reserve date to ensure you don't miss out.

To book your place please email applicantdays@rau.ac.uk



Meet us in your own country

The international team visit a number of countries throughout the year to meet our offer holders. We advertise our visit locations and dates on our [website](#). You can also e-mail the International Team at: international@rau.ac.uk



ROYAL AGRICULTURAL UNIVERSITY
CIRENCESTER

Cirencester and further afield

The university campus is set on 25 acres of magnificent grounds amid the beautiful Cotswold countryside.

Off campus there is plenty to explore. The busy Roman town of Cirencester, referred to as the capital of the Cotswolds, is just a mile away. Cirencester has many shops, bars and restaurants to choose from. Remember to take your student card to take advantage of discounts available to students at a range of stores.



The Cotswold Water Park is 15 minutes drive away and offers 150 lakes set over 40 square miles offering activities such as kayaking, canoeing, sailing, rowing, wakeboarding and windsurfing.

Bath, Bristol, Oxford and Cheltenham are all within an hour of the University and promise an exciting day out. Alternatively, London is just 90 minutes by direct train, the perfect distance for a day trip.





ROYAL AGRICULTURAL UNIVERSITY
CIRENCESTER



The Student Union

The Student Union (SU) team are always busy developing fantastic activities, clubs, societies and some of the country's finest event weeks and balls. You'll be able to meet the SU team at the applicant day and find out what they can offer you.



You can also view the list of societies and clubs at the RAU [here](#).





ROYAL AGRICULTURAL UNIVERSITY
CIRENCESTER

FAQs

What happens if I experience difficulties at examination time?

We understand that circumstances can arise which have a detrimental impact on exam performance. If you marginally miss the conditions of your offer, the School will consider severe extenuating circumstances in mid-August. Unfortunately, there is no guarantee that we will be able to confirm your offer.

When do I need to send your proof of my qualifications?

If you are taking qualifications that are required for you to complete your conditions, it is your responsibility to ensure that your results reach us. You should send them to admissions@rau.ac.uk as soon as you receive them; and by 31st August 2016 at the very latest.

Overseas applicants who require a study visa will need to send in their results by 1st August 2016 the latest to allow sufficient time to apply for their visa application.

I have changed my mind about the course I want to study. Can I change to another course?

Please contact us to discuss this. It may be possible, but it will depend on whether places are still available, how competitive the new course is, and whether your subjects and grades are suitable. If the course you wish to study is in the same area or department as your original one, there is a good chance you will be able to change, but this cannot be guaranteed.

More FAQs can be found in the MyRAU website

I have changed my postal and/or email address. What should I do?

Please notify the Admissions Office of your new address in writing as soon as possible.

What happens if I have applied for deferred entry?

If your offer is for deferred entry you must still satisfy all the conditions of your offer by 31st August. If you are successful in meeting those conditions or if your offer is already unconditional, a place will then be reserved for you to start in September 2017.

I no longer want to start my postgraduate course, who do I tell?

It's important to contact the admissions team as soon as possible if you intend to withdraw your application.

Who do I need to contact if I would like to talk to someone about special support arrangements?

The university Disability Officer Dr John Conway provides a range of services for students who have special needs, disabilities or medical conditions. If you would like to talk to John you can contact him at john.conway@rau.ac.uk or phone 01285652531 Ext. 2234

I have some questions about the scholarships you offer, who can I contact for further information?

You can contact our Admissions team on 01285 889912 or email Helen Joyner at scholarships@rau.ac.uk.



ROYAL AGRICULTURAL UNIVERSITY
CIRENCESTER

Map

Royal Agricultural University Cirencester

Administration Wing	24	Garden House	8	Postgraduate Centre	8	School of Agriculture, Food & Environment	16
Atrium Café	11	Garner Lecture Block	16	Science Laboratories	28	School of Business & Entrepreneurship	16
Bathurst Wing	20	George Wing	25	Sir Emy's Jones Centre	10	School of Equine & Management Science	16
Bledisloe Court	31	Gym	9	Squash Courts	29	School of Real Estate & Land Management	7
Boutfour Hall	17	Kenneth Russell Room	22	Student Surgery	23	School of International Affairs & Distance Learning	33
Catering & Dining Rooms	21	Lauderette	30	Tithe Barn, Union Club & Bar	26		
Cedar Lodge	7	Library & Computer Resources	13	Vic Hughes Hall	1		
Chapel	27	Library Foyer	14	Woodland Lodge 1	2		
Coad Court	32	New Halls of Residence	5	Woodland Lodge 2	3		
Shop	12	Outreach Centre	6	Woodland Lodge 3/ Jubilee	4		
Food Centre	19	Parkinson Lecture Theatre	15				
				Main Entrance	A		
				Stroud Road Entrance	B		
				Woodland Entrance	C		